



Thank you!

Thank you for ordering a Downloadable WOOD PLAN. We hope you enjoy being a part of this new online experience and that you have fun building your wood-working project.

Please remember that this copyrighted material is for your use only. It is unlawful to share this file with someone else or to reprint it in any form.

Bill Krier
Editor
WOOD® magazine

Adobe Acrobat Troubleshooting Guide

*If you can read this page, your Acrobat program is working correctly!
But you may still have problems or specific issues such as printing and saving your Downloadable WOOD PLAN.*

My printer won't print the text correctly

Almost all printing problems are due to not enough free system resources memory. The files are very memory intensive since they include graphics, text, and photos. Close all other programs/applications and print directly out of the Acrobat Reader program, not your Web-browser.

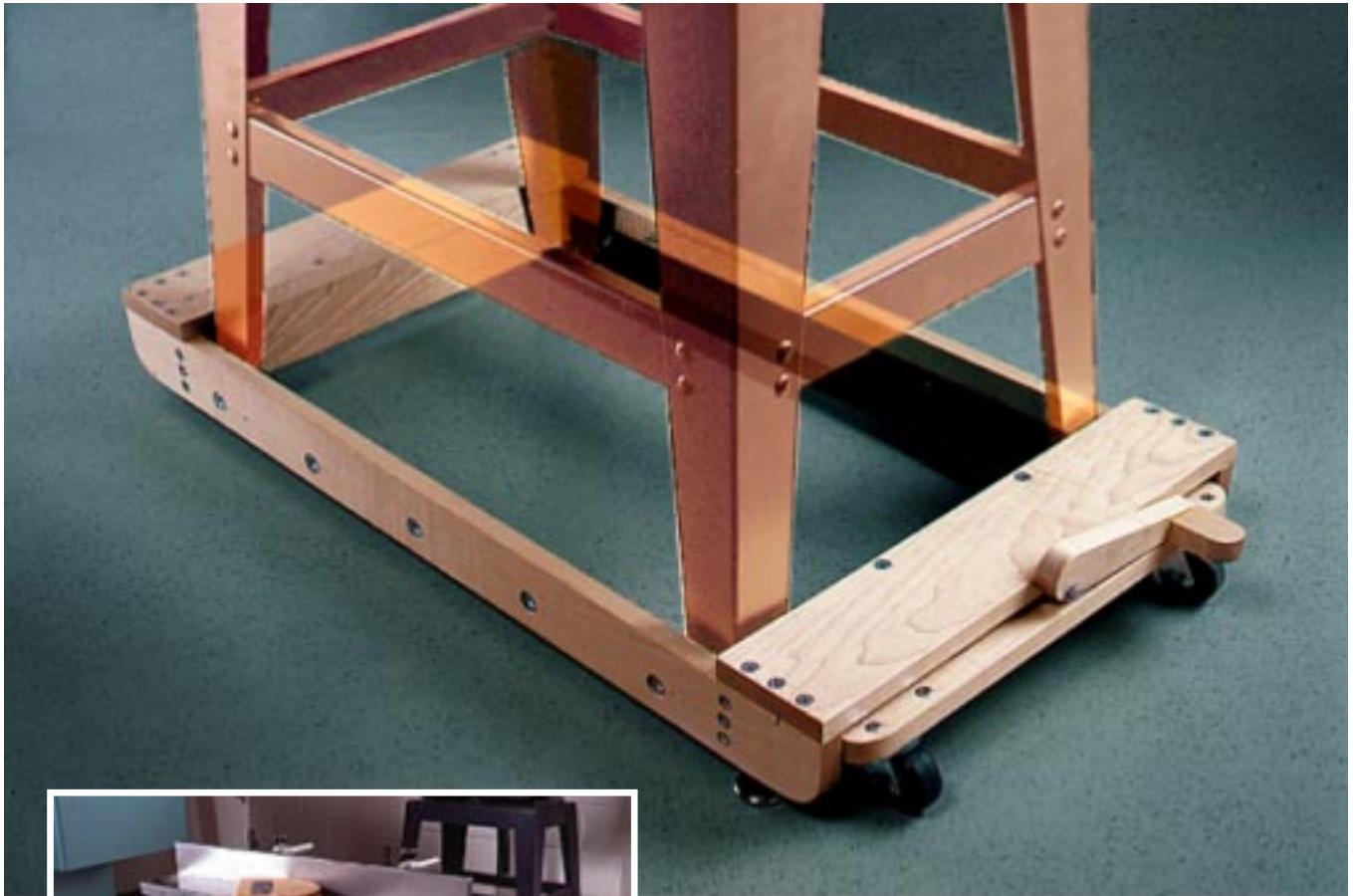
Patterns are not printing full size

Make sure your printer is set to print at 100% and that "print to fit" is not checked. These settings are selected in the printer setup or printer options.

I can't save my file now that it's downloaded

You must save the plan when you download the file. Download the file again, except this time try right-clicking on the red download button. A menu window will open. Select "Save target as" or "Save link as" to save the file to your hard drive. Once saved, you can open it with Adobe Acrobat Reader.

For more details on using Adobe Acrobat Reader please visit our online help section at:
<http://woodstore.woodmall.com/clicherforde.html>



Roll-Around TOOL BASE

Tired of muscling your tools around the shop when you need to use them or clean around them? If so, try this money- and back-saving solution—a four-wheeled tool base for moving heavy woodworking machines quickly and easily. Once you build one (or more), you'll wonder how you got by without it.

Bill of Materials

Part	Finished Size			Mati.	Qty.
	T	W	L		
A sides	3/4"	23/4"	TBD	M	2
B ends	3/4"	23/4"	TBD	M	2
C end caps	3/4"	4"	TBD	M	2
D blocks	1"	2"	3"	LM	4
E caster mount	3/4"	4"	TBD	M	1
F cam lever	3/4"	15/8"	71/4"	M	1
G toekick	3/4"	11/2"	2"	M	1

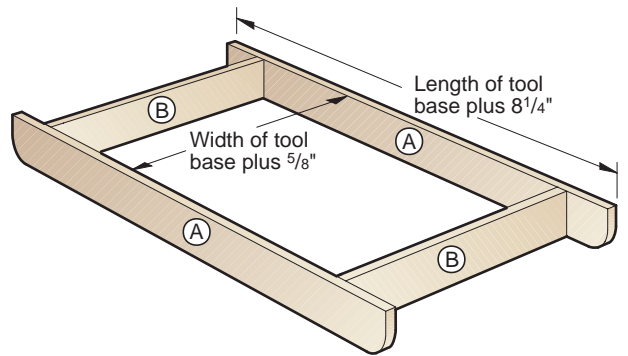
TBD: To be determined. Read the instructions for details on sizing a base to fit your machine base.

Materials Key: M—maple, LM—laminated maple.

Supplies: 2—1/8x1 1/2" angle iron crosscut to fit your base, 10—1/4x3/4" flathead machine screws with 1/4" T-nuts, 8—1/4x1 1/4" flathead machine screws with hex nuts and lock washers, 8—1/4x2 1/2" flathead machine screws with hex nuts and lock washers, 2—2" fixed casters and 2—2" swivel casters, (90-lb. plate casters with rubber wheels), 2—1 1/2x2 1/2" butt hinges with 12—#10x1/2" panhead sheet-metal screws, 1—1/4x2" lag screw with a flat washer, 28—#14x2" sheet-metal screws, 2—3/8" threaded inserts with matching leveler glides, 2—#8x1 1/2" flathead wood screws, clear finish.

Buying Guide

Hardware kit. All the items listed in the Supplies listing above except for the angle iron and finish. please call for current price. Kit no. WD-MTB. Miller Hardware, 1300 M.L. King Pkwy., Des Moines, IA 50314, or call 515/283-1724 to order.

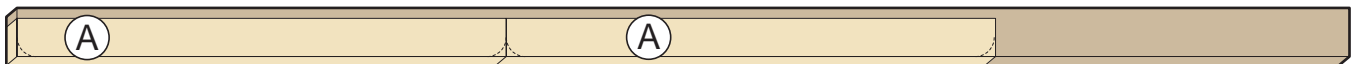


Tips on sizing your tool base

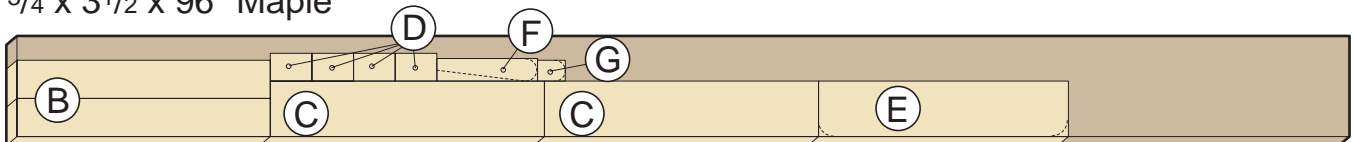
To determine the size of the mobile tool base, start by measuring the outside length and width of your tool base. Then, add 8 1/4" to the length to determine the length of the sides (A), and add 5/8" to the width to determine the length of the ends (B). Next, adjust the other pieces according to the instructions. The mobile base we built fits the base of our Sears 17 3/8x27" bandsaw.

See the Buying Guide at the end of the Bill of Materials *at left* for a hardware kit. The kit contains everything except the angle iron. Due to the cost of cutting and shipping, and the ease of availability, you're better off purchasing angle iron locally.

CUTTING DIAGRAM

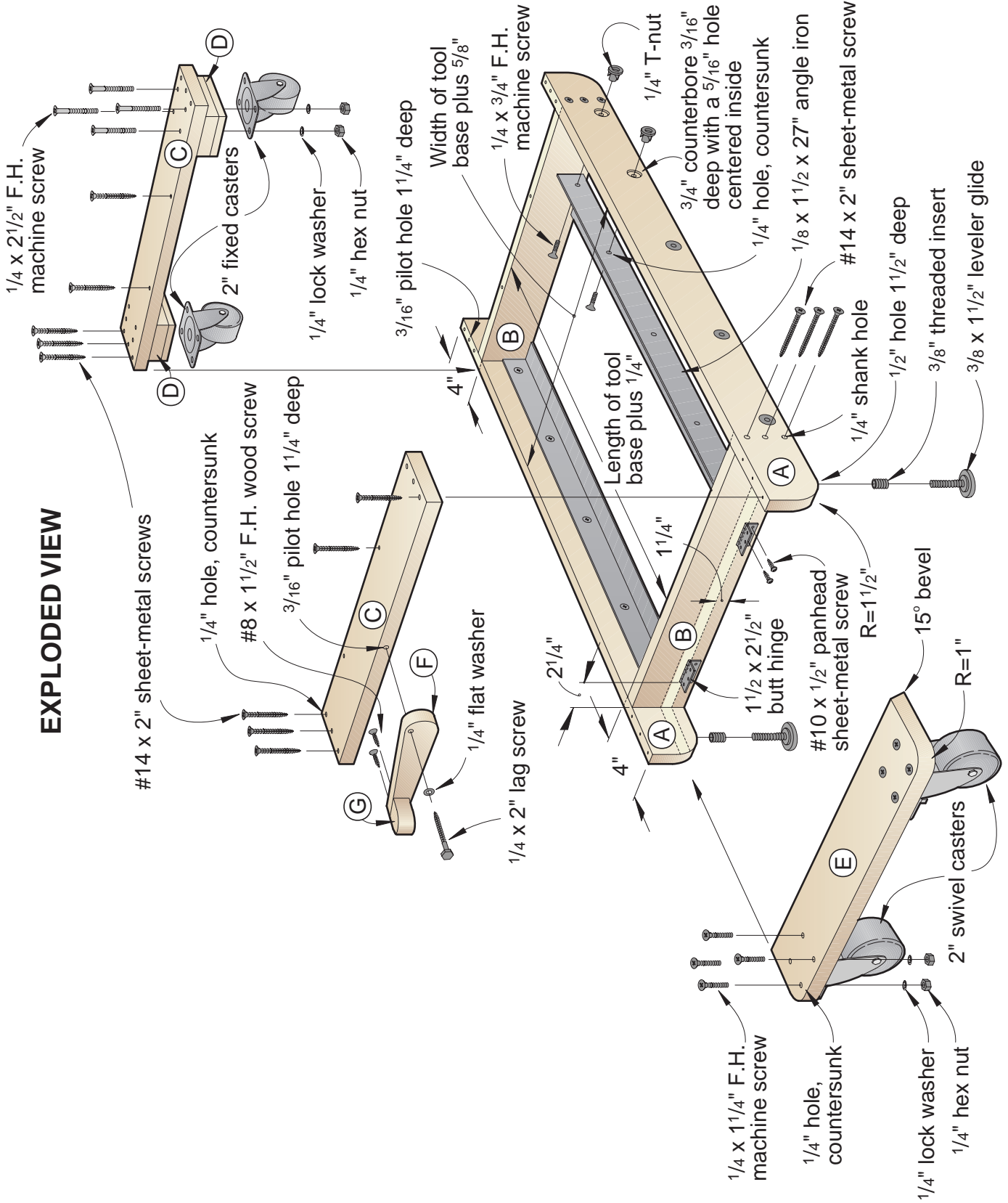


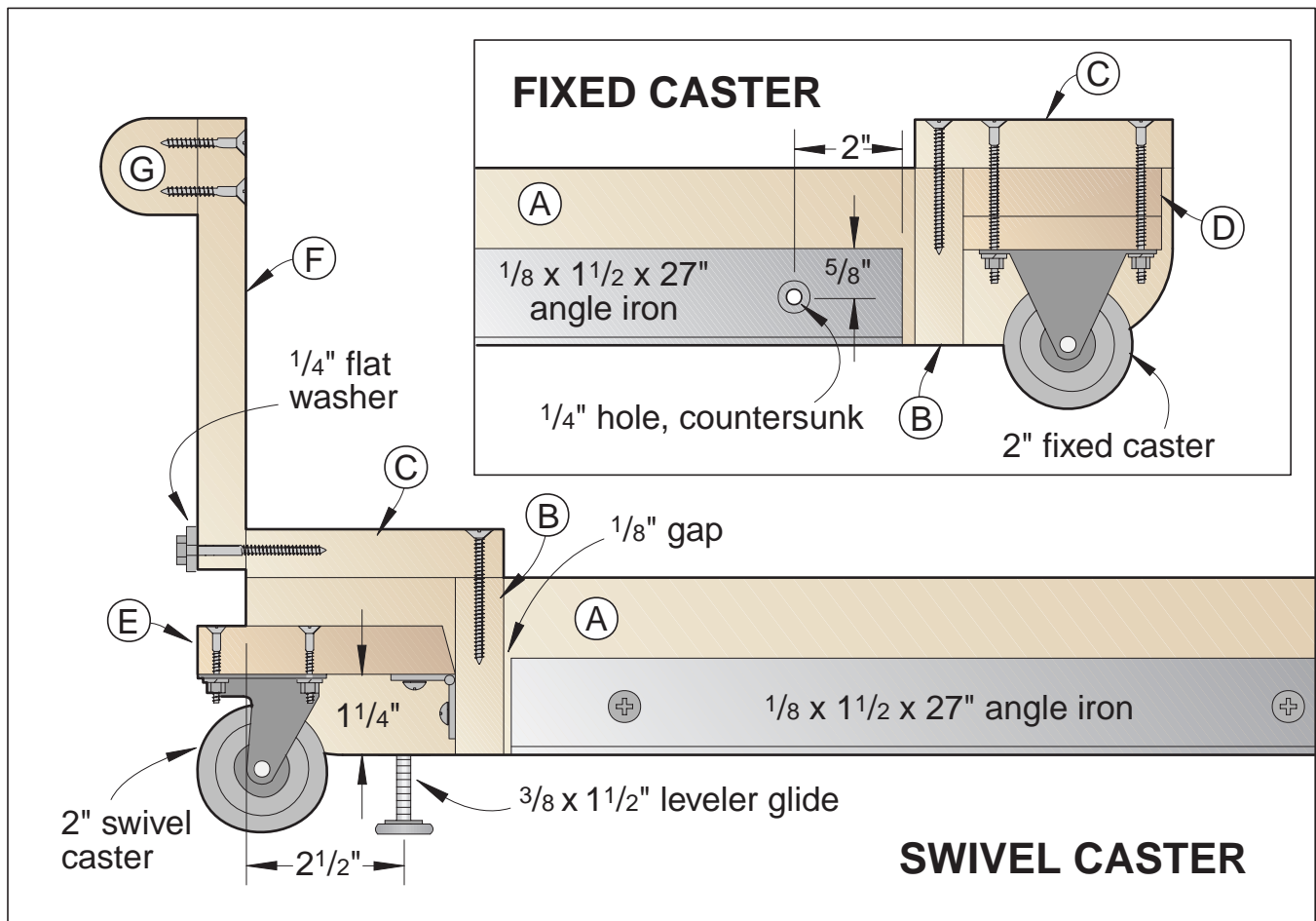
3/4 x 3 1/2 x 96" Maple



3/4 x 7 1/4 x 96" Maple

EXPLODED VIEW





The basic wood frame comes first

1 From $\frac{3}{4}$ " hardwood stock (we used maple), cut the base sides (A) and ends (B) to the lengths determined using the information in the box on *page 2* and to the width listed in the Bill of Materials.

2 Clamp the ends (B) between the sides (A) in the configuration shown on the Exploded View drawing and where dimensioned on the Parts View drawings on *pages 5 through 7*. Check for square. *The opening should measure $\frac{1}{4}$ " longer than your tool base and $\frac{5}{8}$ " wider.* Verify this, then drill countersunk holes through the sides (A) and centered into the ends of the ends (B). Drive in the screws, *but do not glue the joint yet.* For extra holding power, we used sheet-metal screws. For ease in driving in the screws, add beeswax to the screw threads.

3 Measure from the outside face of

one A to the outside face of the opposite A to determine the length of the end caps (C). Cut the end caps to length from stock ripped to 4" wide.

4 Laminate stock to form the 1"-thick caster blocks (D), then cut them to size. Temporarily clamp the end cap (C) for the fixed casters in place, and glue the caster blocks to the bottom side of the end cap, flush against the end (B) and sides (A). Do not glue the blocks to A and B.

5 Cut the swivel-caster mount (E) to the length of the opening minus $\frac{1}{8}$ ". Bevel-rip one edge at 15° where shown on the Exploded View drawing. Mark and cut a pair of 1" radiuses on opposite corners. Drill the mounting holes, and bolt a pair of 2" swivel casters to the bottom side of the mount (E).

6 Mount a pair of $\frac{1}{2}$ " butt hinges $2\frac{1}{2}$ " long to the bottom side of the caster mount (E). (After twisting off several

of the screws supplied with the hinges, we used #10 $\times\frac{1}{2}$ " panhead sheetmetal screws to secure the hinges to the caster mount.) Then, drill the pilot holes and screw the hinges to the end (B) where dimensioned on the Swivel Caster drawing.

Add the angle iron and leveling glides next

1 Hacksaw a pair of $\frac{1}{8}\times 1\frac{1}{2}$ " angle iron pieces cut to the length of the opening minus $\frac{1}{4}$ ". With a cloth and paint thinner, thoroughly clean the angle iron before bringing it in contact with your wood.

2 Drill equally spaced mounting holes through the angle iron. See the side (A) on the Parts View for spacing. Next, transfer the hole centerpoints to the inside face of the sides (A). Using a high-speed steel countersink bit, countersink the holes on the inside face of each piece of angle iron.

3 Disassemble the tool base, and drill the mounting holes through the sides (A) for attaching the angle iron. Counterbore the holes on the outside face of the sides (A) for housing the T-nuts.

4 Cut a 1½" radius on the bottom corners of the sides (A) where shown on the drawings.

5 Mark the centerpoints, and drill the mounting holes for the ⅜" threaded inserts on the bottom edge of the sides, 2½" in from the ends where shown on the Swivel Caster drawing.

6 For ease in driving the inserts into the sides (A), cut the head off a ⅜×3" bolt. Double-nut the bolt and thread the insert onto the bottom of the bolt below the nuts. Chuck the assembly into your drill press, and turn the chuck by hand to drive the insert squarely into the mounting hole. Repeat for the second insert.

Add the cam-action foot lever

1 Transfer the patterns from the full-size patterns on *page 7* for the cam lever (F) and the toekick (G) to ¾" stock, and bandsaw them to shape. Sand the edges to remove the saw marks.

2 Drill a ¼" hole through the cam lever for attaching it to the end cap (C) later. Mark the centerpoint, and drill a mating pilot hole in the end cap used at the swivel caster end of the base.

3 Drill a pair of mounting holes through the cam lever and into the toekick. Glue and screw the toekick to the cam lever.

Final assembly and finishing

1 Remove the casters from the base. Remove the hinges from parts B and E.

2 Glue and screw the base ends (B) between the sides (A), checking for square. Screw the end caps (C) in place.

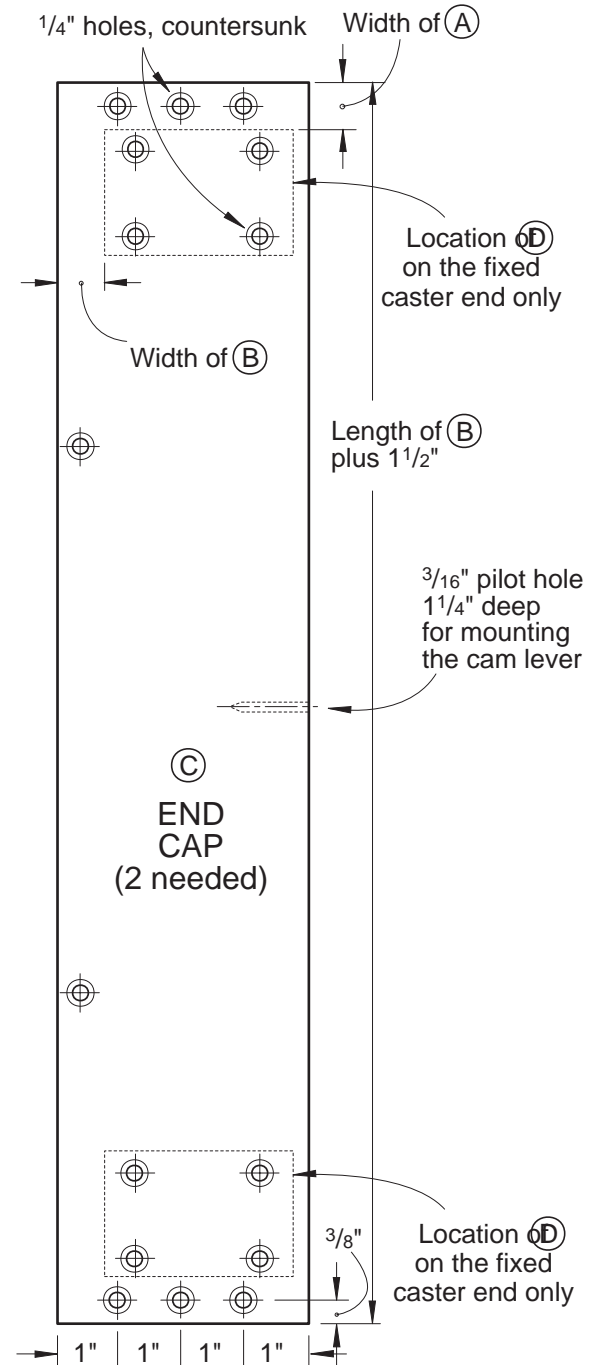
3 Add a clear finish or paint the pieces the same color as the machine it will support. Be careful not to get any finish in the threaded inserts used to house the levelers. Paint the angle iron.

4 Drive the panhead sheet-metal screws to hinge the caster mount (E) to the end (B).

5 Use a wrench to drive the ¼" lag screw connecting the cam lever (F) to the end cap (C).

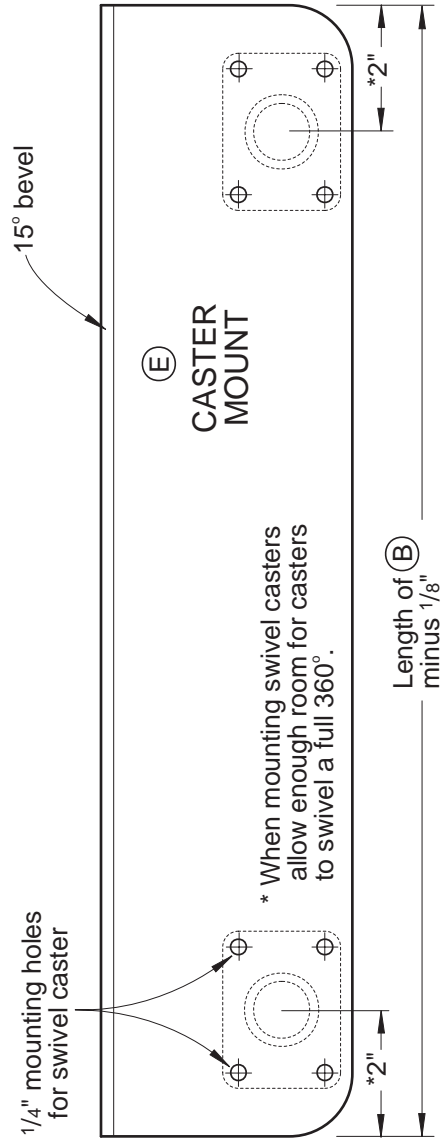
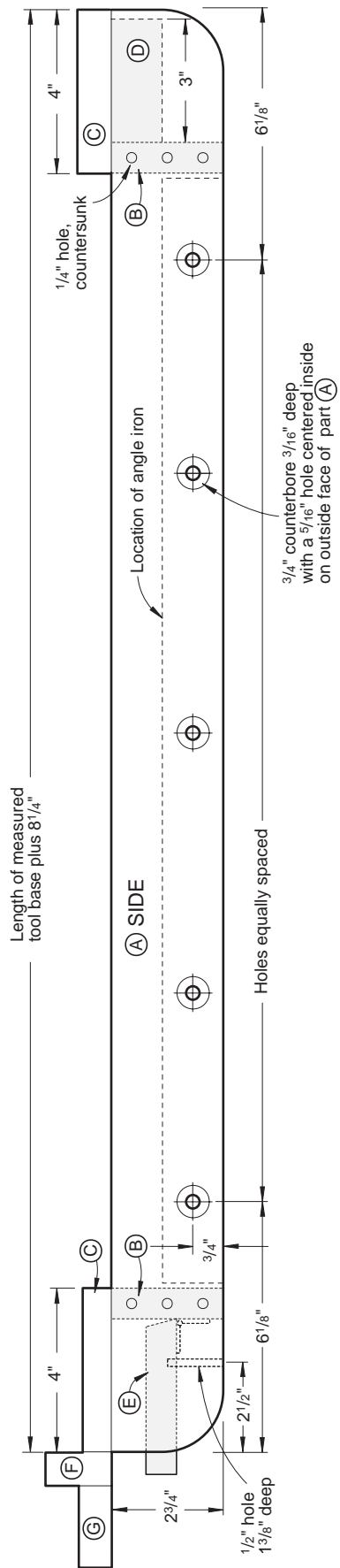
6 Tap the T-nuts in place, and secure the angle iron to the base sides. Bolt the casters in place.

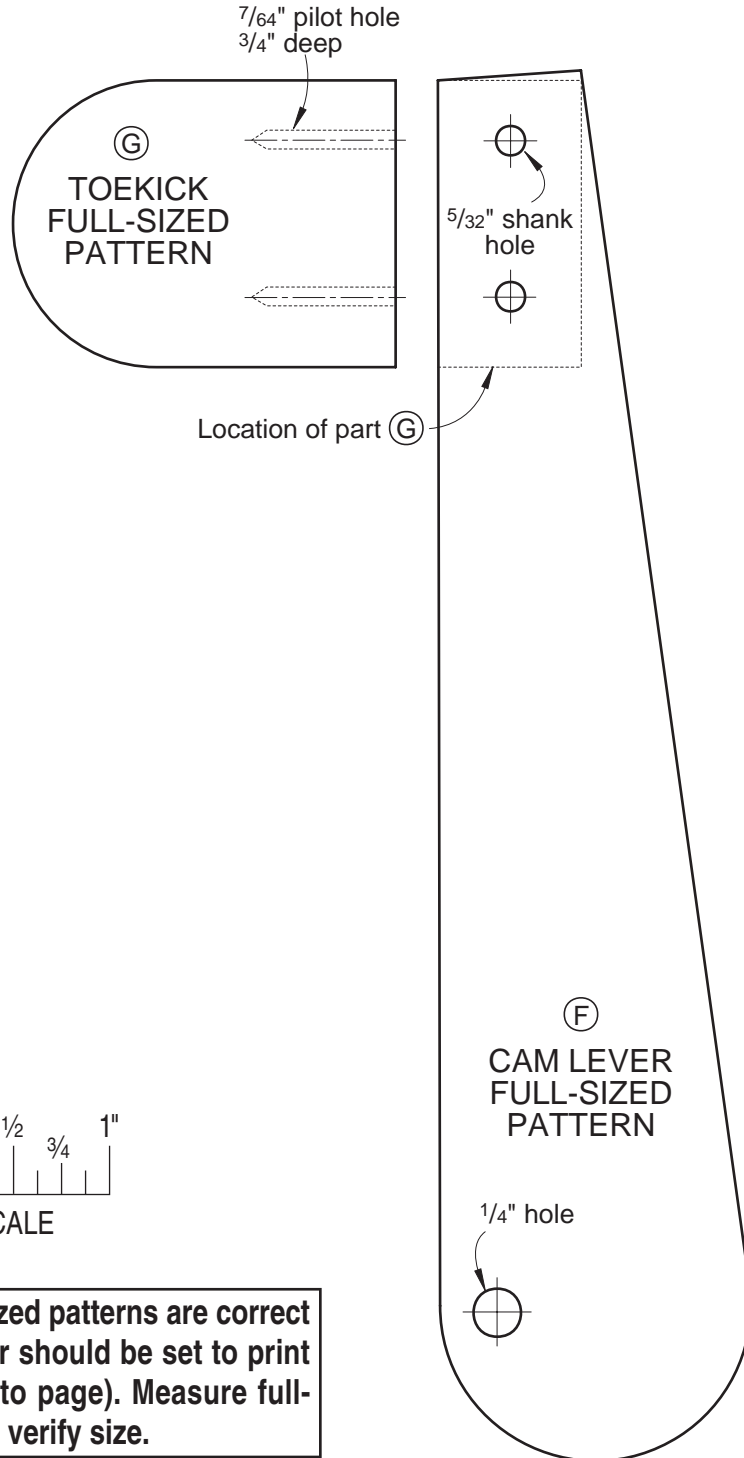
7 Add the levelers. Raise the levelers so the base rests on the levelers when the cam lever is flipped to the right side, raising the caster mount and swivel casters. When you want to move the tool, flip the cam lever to the left to lower the casters. ♣



The purchase of these plans does not transfer any copyright or other ownership interest in the plans, the design, or the finished project to the buyer. Buyer may neither reproduce the plans for sale nor offer for sale any copies of the finished project.

Produced by Marlen Kemmet
 Project Design: James R. Downing
 Illustrations: Roxanne LeMoine
 Graphic Design: Jamie Downing
 ©COPYRIGHT MEREDITH CORPORATION 1998





WOODMALL® The Internet's Largest Source for Woodworking Tools and Accessories

<http://www.woodmall.com>

Thanks for your order!

Now that you've got a detailed plan to build that perfect project, visit the WOOD MALL for the internet's largest source for woodworking tools and accessories. The WOOD MALL offers:

- Over two dozen woodworking-related stores
- More than 50,000 tools & accessories
- 24-Hour shopping
- Special sales & closeouts
- Nearly 40 tool comparison charts
- **FREE** monthly woodworking seminar

Visit Today! <http://www.woodmall.com>



Current issue not shown

Like no other magazine, WOOD helps you make the most of your shop time ... takes your skills to the next level. Every issue of WOOD is jam-packed with ...

- Smart tips, tricks, secrets and shortcuts that save you time, effort and money
- Valuable tool reviews with at-a-glance information charts that give you helpful product comparisons
- Giant full-size pattern pull-outs
- Crystal-clear step-by-step instructions, exploded diagrams, finishing secrets and techniques for that professional look – everything you need to bring out your woodworking genius!

- 2 years (14 issues) just \$44 **SAVE \$39.30 off single-copy rate!**
- 1 year (7 issues) just \$26 **SAVE \$15.65 off single-copy rate!**
- Payment Enclosed Bill Me

Fill out information below and mail to: WOOD® Magazine P.O. BOX 37439, Boone, IA. 50037-0439 or Subscribe Online at <http://www.woodmagazine.com/subscribe>

My Name (please print) _____

Address _____ **Apt. #** _____

City _____ **State** _____ **Zip** _____

Canadian Orders: Fill in the form above. Your rate will be 1 year (7 issues) for \$41 – SAVE \$14.65, or 2 years (14 issues) for \$67 – SAVE \$44.30. Prices include postage; 7% GST or 15% HST is added. #12348 2887 RT

U.S. and Canadian subscribers: You also may order by credit card. Call toll free 1-800-374-9663 weekdays from 7 a.m. to 10 p.m. Central Time; Saturdays, 8 a.m. to 3 p.m.; Sundays, 9 a.m. to 3 p.m.

Other International Orders: 2 years for \$89 U.S. or 1 year for \$49 U.S.; prices include postage. To order by credit card call 515/246-6952 during the same hours as listed above (toll charged). Or complete this form; mail with US funds to: WOOD® Magazine, P.O. Box 37439, Boone, IA. 50037-0439 USA.

Your Money-Back Guarantee: You must be satisfied with your subscription or you can get a refund for all unmailed issues.

WOOD® Magazine is published 7 times a year. Savings are based on \$5.95 U.S., \$7.95 Canadian single-copy rate. The first issue mails in 8-12 weeks. Subscription prices subject to change.